

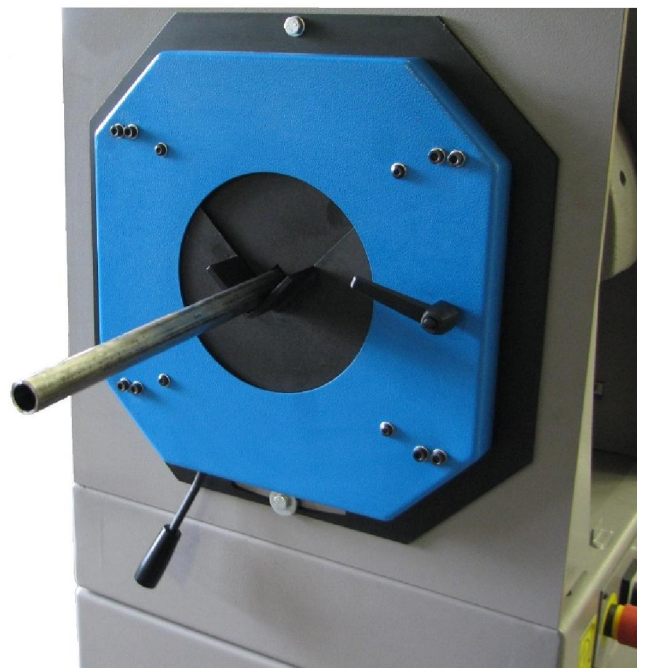


# SPONTAN

TRENN- UND ENTGRATTECHNIK

## Planomat ZII-FU

Semi automatic orbital  
deburring machine



### Technical data in Standard version

Material geometry:	independent		
Drive:	3,00	kW	Brush drive
	0,55	kW	Rotation
Brush diameter:	max. 250	mm	
Brush width:	55 – 165	mm	(max.180mm)
Location hole:	Ø50,8 with keyway		
Rotational speed:	1500 – 3000	rpm	
	continuous 0 – max.3000 rpm (Option)		
Workpiece data			
Length:	from 30mm – random (manual infeed)		
Profile diameter:	from 6 – 120	mm	
Dimensions:			
Width / height / depth	580 x 1400 x 1100 mm		

### Semi-automatic orbital deburring machine Type PLANOMAT "ZII-250"

Because of steady perfecting and constant advancements, the present **Planomat ZII-250** is the perfect deburring machine for straight, helical catted and bended tubes or hard twistingly goods.

The machine is particularly robust designed to handle difficulty deburring work. The working area is between the diameters of 6 - approx.120mm and its relevant profile dimensions. Special profiles such as aluminum, steel up to stainless steel can be deburred optimally (with matched brush options).

The deburring unit got **two drives**:

On the one hand there is the brush drive (high rotation speed) with 3,0 kW drive power (directly powered) and one the other hand the rotation drive (low rotation speed) of the brush unit with 0,55 kW. The whole deburring machine is mounted on to a stable basic housing.

The brush wear will be compensated by a carriage. Therefore, a central adjustment (via handwheel and clamping lever at the reverse side of the machine) will be installed.

A suction unit can be integrated, for incidental chips and dust, inside the unit.

Die Entgratungsanlage ist mit einer mechanisch gesicherten Abdeckhaube versehen.

The prismatic guide unit is provided continuously for diameter areas from 8 to 10 mm. By a quick-set mechanism it is possible to adjust the unit to the relevant diameter. The device will be mounted at the inlet side of the PLANOMAT-ZII-250. That will ensure a quick and cost-saving changeover on each diameter.

### Brush flange / brush change

**Spontan** developed the **Fast Change System**, consisting of a stable one-side brush shaft bearing. Because of its robust, hardly bearing of the brush(-es), this system is even suitable for difficult deburring works.

The brush change will come by loosen of a central clamping nut (SW 60 left-hand thread) with flange.

**Brush change:**                      **approx. 2 - 3 min.**

### Standard Equipment / operating elements

Main switch

- Emergency stop button
- Knobs for rotational speed 0-3000 rpm
- Stop button (red) and Start button (green)
- Brush wear adjustment with clamping lever

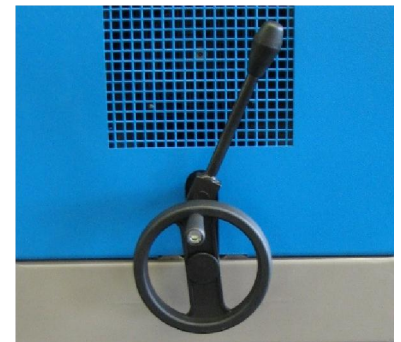
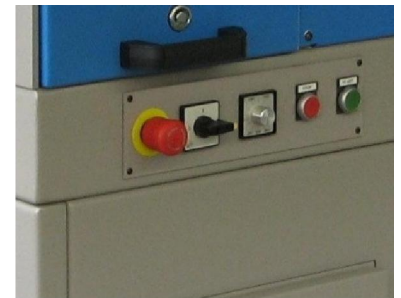
At the reverse side of the machine

### Painting:

RAL 7035 light grey, in combination with RAL 7016 anthracite grey.

### Standard accessoires:

- Operating tools
- 1piece Operating instruction with service manual



## Type

### spontan\_ Planomat ZII-250

inklusive

- Substructure with integrated chips tray
- Brush wear infeed
- Prismatic guide unit
- 2 rotational speeds (1500 / 300 rpm)

Version according to description with standard accessories

Art.-No.:91.530-001/00

### spontan\_ Planomat ZII-250 –FU. (frequency converted brush drive)

inklusive

- Substructure with integrated chips tray
- Brush wear infeed
- Prismatic guide unit
- Continuous brush speed from 0 – 3000 rpm via frequency converter

The rotational speed can be changed at any time via a knob (scaling 0 – 10) to match the handling for different materials.

(e.g. aluminum approx.1400 rpm, steel/stainless steel approx.2750 rpm)

Matching of the cutting speed at reduced brush diameter (brush wear) or immediate matching of the deburring result

Version according to description with standard accessories

Art.-No.:91.530-000/00

## Accessory / Options

### Working brush Ø250mm

WC 1001

Ø250 x 80mm, stock 0,35 mm ASD corrugated

Art.-No. 71.62-0011/00

WC 1800

Ø250 x 55mm, stock 0,20 mm ASD corrugated

Art.-No. 71.62-0018/00

WC 1850

Ø250 x 55mm, stock 0,35 mm ASD corrugated

Art.-No. 71.62-0018/50

WC 1900

Ø250 x 55mm, stock 0,50 mm ASD corrugated

Art.-No. 71.62-0019/00

WC 1910

Ø250 x 55mm, stock 0,20 mm V2A corrugated

Art.-No. 71.62-0019/10

WC 1920

Ø250 x 55mm, stock 0,35 mm V2A corrugated

Art.-No. 71.62-0019/20

Operating brushes in different brush qualities or special editions will you get right after our customer-product related analysis.

### Removable shape good-intake for round tubes:

Art.-No.: 95.514-200/xx

A stable base with admission rings and clamping lever, which will be mounted to the deburring machine by guide pins. The synthetic adapter rings with random mounting diameters are easily and quickly removable.

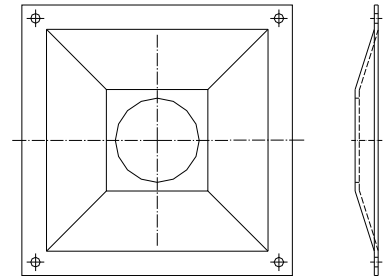


### Adapter plate with front fairing:

Art.-No.: 91.530-900/01

Eine stabile Grundplatte mit einer speziellen Frontmaske zur Entgratung von kurzen Rohrbogen etc.

Durch die Ausführung der Frontmaske (Bohrungsdurchmesser nach Anwendungsprofil) lassen sich Rohrabschnitte bei Rohrbögen oder T-Stücken von **unter 10mm** Länge einfach und sicher entgraten.



### Machine wheels

Art.-No.: 91.530-900/02

It is possible to equip the unit with a wheel system for moving the machine without using a lift- or forklift truck.

1Set machine wheels 91.530-900/02

2x fixed castors & 2x swivel castors with brake and already mounted up on rails

### Dedusting systems

#### Stationary short dust extractor

Art.-No.: 91.517-002/00

Type OMF 10, with integrated spark pre-separator tray

Air volume:	1000 m <sup>3</sup> / h
max. vacuum:	1400 Pa
Drive motor:	0,55 kW 230V / 50 Hz
Suction piece diameter:	100 mm
Length X width X height	550 x 550 x 1220 mm
Painting:	RAL 7012

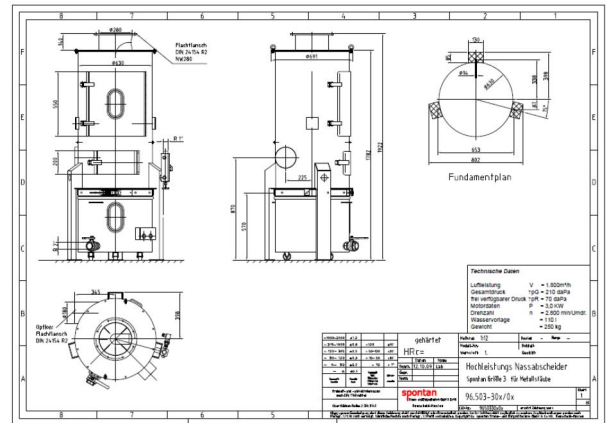


## External wet suction unit Type HNA 3

The extraction unit consists of a sheet steel housing with revision cover, water tank, integrated fan, engine, droplet separator, intake manifold with funnel out of polypropylene (PP), movable mud bucket, fresh water supply, cleaning hose, management for water level regulation with related piping.

Pipe connection	from brush to extraction
Installation of piping	inside the brush unit
Suction rail inside the brush unit	Type Norfil NW 125
Suction vehicles	for travelling brush unit
Electrical control	integrated in main control cabinet

Air performance	1.800 Bm <sup>3</sup> / h
Drive power Motor	3,0 kW
Total pressure	2.100 Pa
Mud bucket	120 Liter
Intake manifold	187 mm
Filling level regulation	autom. via float switch
Average Noise pressure level	82 dB
Dimension width x height x depth	<b>835x1825x760 mm</b>
Weight	250 kg



**Indication:** The dust deposits inside the machine housing have to be cleaned in short intervals (daily) during the deburring of aluminum.

**Aluminum dust is inflammable,  
fine particles < 500µm can create  
in combination with air, explosive mixtures**



**It is not allowed to aspirate mixed-dust (Steel and Aluminum)  
Please observe the aluminum dust rules  
Danger of Explosion!**

As per BGR 109 Brush dust should be removed by dry aspiration with wet separator.

**The customer is responsible for the safe  
handling of the unit during deburring of aluminum profiles.**